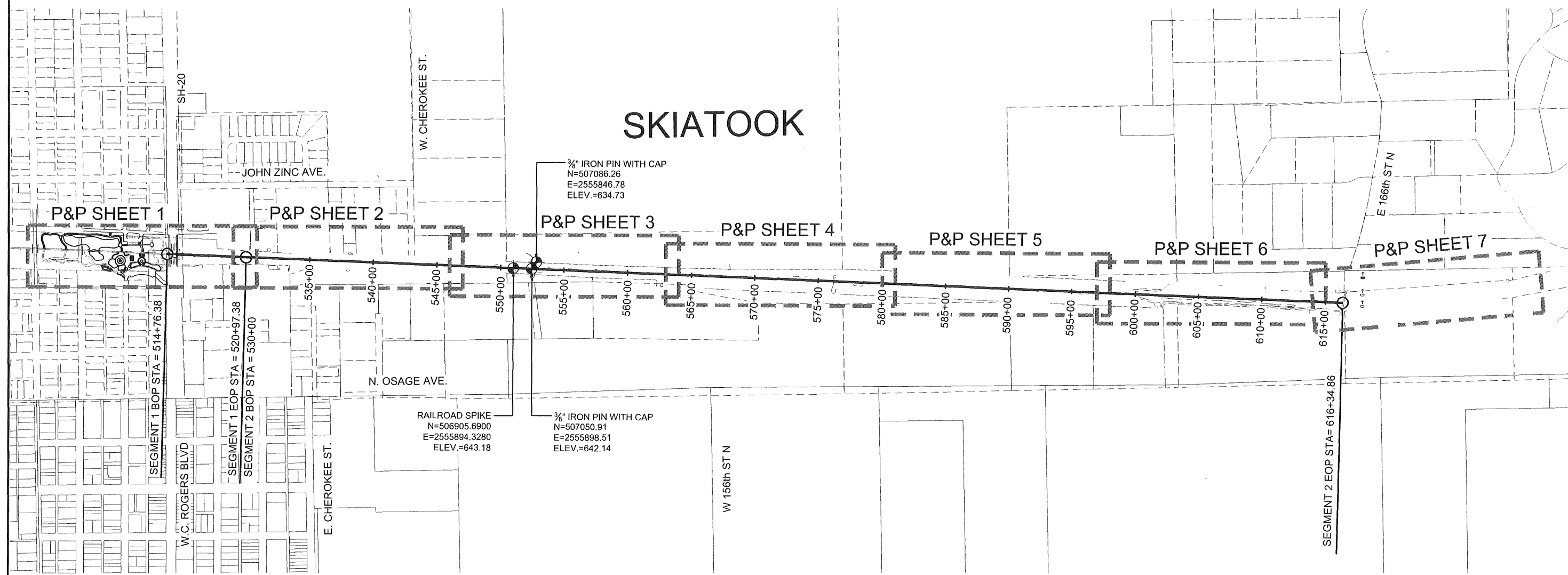


OKLAHOMA DEPARTMENT OF TRANSPORTATION					
FED. ROAD DIST. NO.	STATE	PROJ. NO.	FISCAL YEAR	SHEET NO.	TOTAL SHEETS
6	OKLA	28839(04), 32530(04)			
DESCRIPTION			REVISIONS	DATE	

NOTE:
TRAIL CENTERLINE STATIONING
CONTINUES FROM EOP OF
PREVIOUS PROJECT



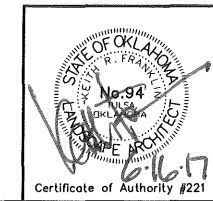
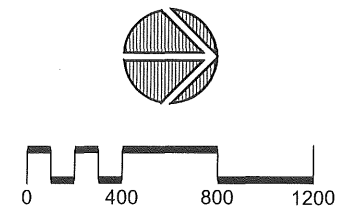
SKIATOOK

3/8" IRON PIN WITH CAP
N=507086.26
E=2555846.78
ELEV.=634.73

RAILROAD SPIKE
N=506905.6900
E=2555894.3280
ELEV.=643.18

3/8" IRON PIN WITH CAP
N=507050.91
E=2555898.51
ELEV.=642.14

W 156th ST N



Osage Prairie Trail Extension		
Design	JM	8/16
Drawn	JM/BB	8/16
Checked	JM/KF	6/17
Approved		
Squad	LPCI	

PREPARED BY:
LANDPLAN CONSULTANTS
1110 West 23rd Street TULSA, OK 74107 918-584-6464

KEYMAP AND SURVEY DATA

State Job No. 28839 (04), 32530 (04) Sheet No. 5 of 32